



**Riverside House**  
Bankside SE1

2A Southwark Bridge Road

Riverside House provides 12,518 sq ft of refurbished space in a prominent waterside position on Bankside.



The building has undergone a recent refurbishment, and offers two new receptions and a co-working area. The end-of-journey facilities are newly enhanced to provide exceptional occupier benefits.



### Specification.

- Two building receptions
- New co-working lounge
- 136 Secure cycle parking facilities
- Showers and changing facilities
- EPC Rating C
- Terrace overlooking the river
- LED lighting
- Chilled beam air-conditioning
- Panoramic views
- BREEAM Very Good



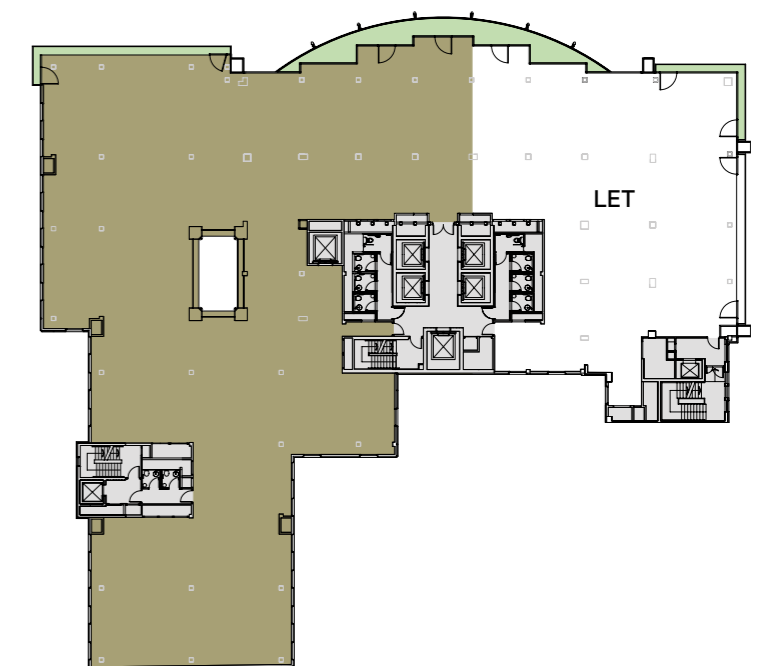
The space offers unrivalled panoramic views over the City of London & St Paul's Cathedral.

The Part 4th floor features a spacious balcony overlooking the River Thames and floor to ceiling glazing, creating light filled space.



### Part 4th Floor.

12,518 sq ft (1,163 sq m)



For indicative purposes only. Not to scale.



Situated in  
buzzy **Bankside**  
surrounded  
by lively bars,  
restaurants and  
amenities.



Bankside has a thriving food and beverage scene, with artisan coffee shops, destination bars and acclaimed restaurants. From experimental street food to Michelin starred chefs there's something to suit any occasion.



London Bridge, Southwark, Mansion House, Cannon Street & Blackfriars underground and rail stations are a short walk away, providing ease of movement across London and beyond.



Bankside Pier.

3 minutes



Blackfriars.

6 minutes



Mansion House.

7 minutes



Cannon Street.

7 minutes



London Bridge.

7 minutes



Bank.

10 minutes



Waterloo East.

14 minutes



King's Cross St Pancras.

18 minutes



Bond Street.

18 minutes



Canary Wharf.

22 minutes



City Airport.

32 minutes



Gatwick Airport.

39 minutes



All journey times taken from the building. Source: TfL.

#### Local Occupiers

1. Allies and Morrison
2. Boodle Hatfield
3. Kroll
4. HSBC
5. EY
6. Brandnation
7. Joseph Joseph
8. Mozilla
9. News UK
10. Ofcom
11. Ogilvy
12. Omnicom
13. PwC
14. reForm Architects
15. Telstra
16. TfL

#### Bars & Restaurants

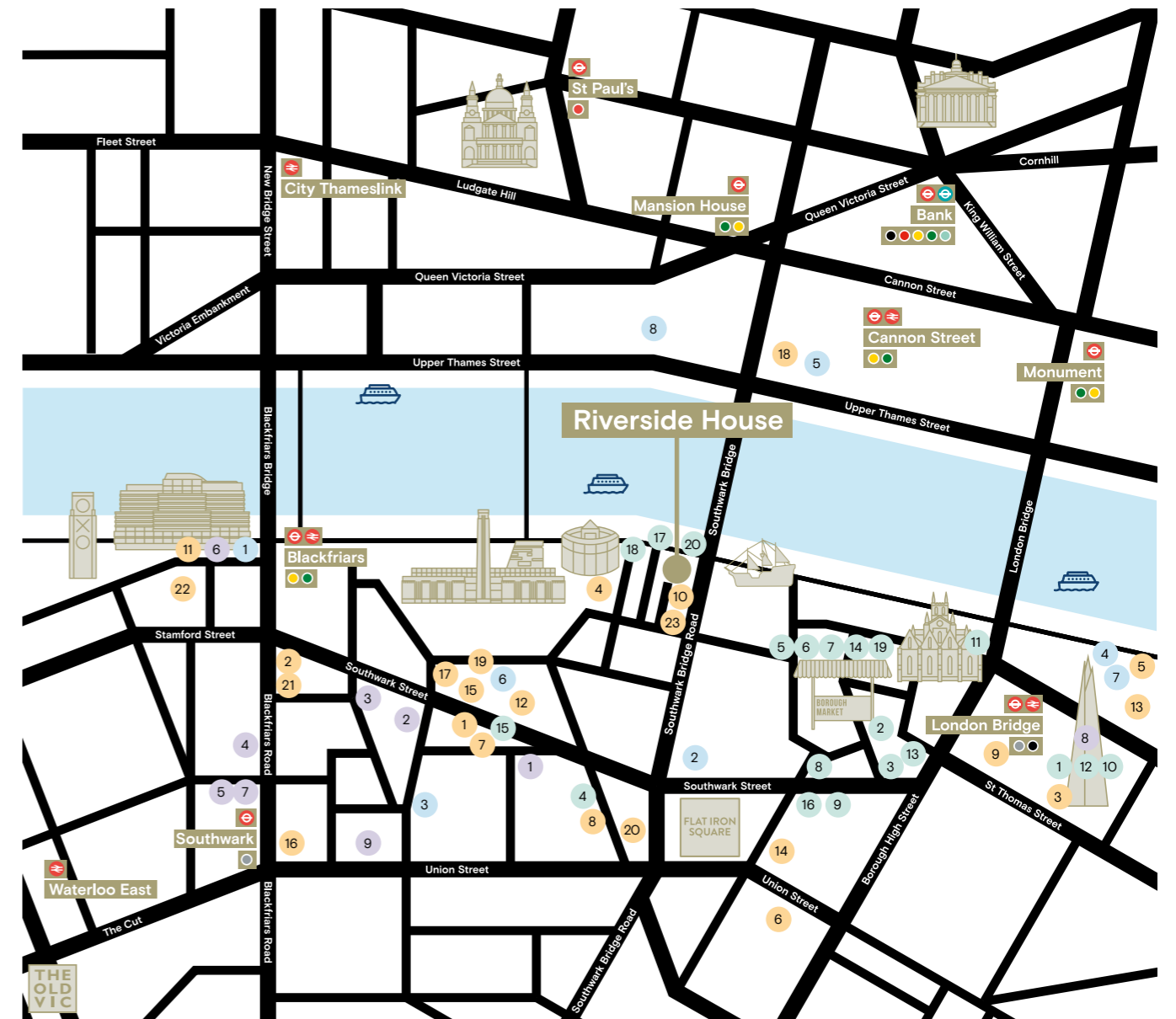
1. Aqua Shard
2. Bedale's
3. Brindisa
4. Caravan
5. Elliot's
6. Fish!
7. Hawksmoor
8. Casa do Frango

#### Hotels

1. CitizenM
2. Hilton
3. Holiday Inn

#### Fitness

1. 1Rebel
2. F45
3. Fitness4Less
4. Fitness First
5. Nuffield Health
6. The Bankside Health Club
7. Third Space
8. Virgin Active



# riversidehouselondon.com

## Terms.

Available upon request.

## Viewings.

Strictly through sole letting agents:

### Amy Bryant

07551 172 931

abryant@geraldeve.com

### Simon Glennon

07826 353 526

sglennon@geraldeve.com



**GERALDEVE**  
A NEWMARK COMPANY

#### Disclaimer

Gerald Eve LLP, a Newmark company, is a limited liability partnership registered in England and Wales (registered number OC339470 and registered office at One Fitzroy 6 Mortimer Street London W1T 3JJ). The term partner is used to refer to a member of Gerald Eve LLP, Newmark GE Services LLP or an employee or consultant with equivalent standing and qualifications.

The particulars are issued pursuant to the following conditions:

1. No Offer: These particulars do not, and shall not constitute, in whole or in part, an offer or a contract or part thereof. Gerald Eve LLP, nor any partner, or any employee or consultant thereof ("Gerald Eve Persons"), has authority to make or enter into any such offer or contract.
2. No Reliance: All statements contained in these particulars are made without acceptance any liability in negligence or otherwise by Gerald Eve LLP and/or any Gerald Eve Person, for themselves or for the Vendors/Lessors. None of the statements contained in these particulars is to be relied on as a statement or representation of fact or warranty on any matter whatsoever, and intending purchasers must satisfy themselves by whatever means as to the correctness of any statements made within these particulars and/or the fitness of the property for any purpose whatsoever. In particular, and without prejudice to the foregoing: (a) all images, photographs, videos etc. may show only certain parts of the property and only at it appeared at the time they were created; (b) any statement concerning price or value is provided purely as guidance, it does not constitute a formal valuation and should not be relied upon; and (c) any reference to alterations to, or use of, any part of the property does not mean that any necessary planning, building regulations or other consent has been obtained.
3. Crime Prevention: In accordance with our legal obligations pursuant to the Money Laundering, Terrorist Financing and Transfer of Funds (Information on the Payer) Regulations 2017, the Proceeds of Crime Act 2002 and other regulations, Gerald Eve LLP may be required to establish the identity and source of funds of all parties to property transactions (including both Vendors/Lessors and Purchasers/Lessees). Failure to procure this information where needed may delay or cancel any potential transaction or prevent Gerald Eve LLP from acting altogether.
4. Privacy: For further information concerning how we use personal data please see our privacy statement: [www.geraldeve.com/privacy-statement/](http://www.geraldeve.com/privacy-statement/)

Particulars issued July 2023